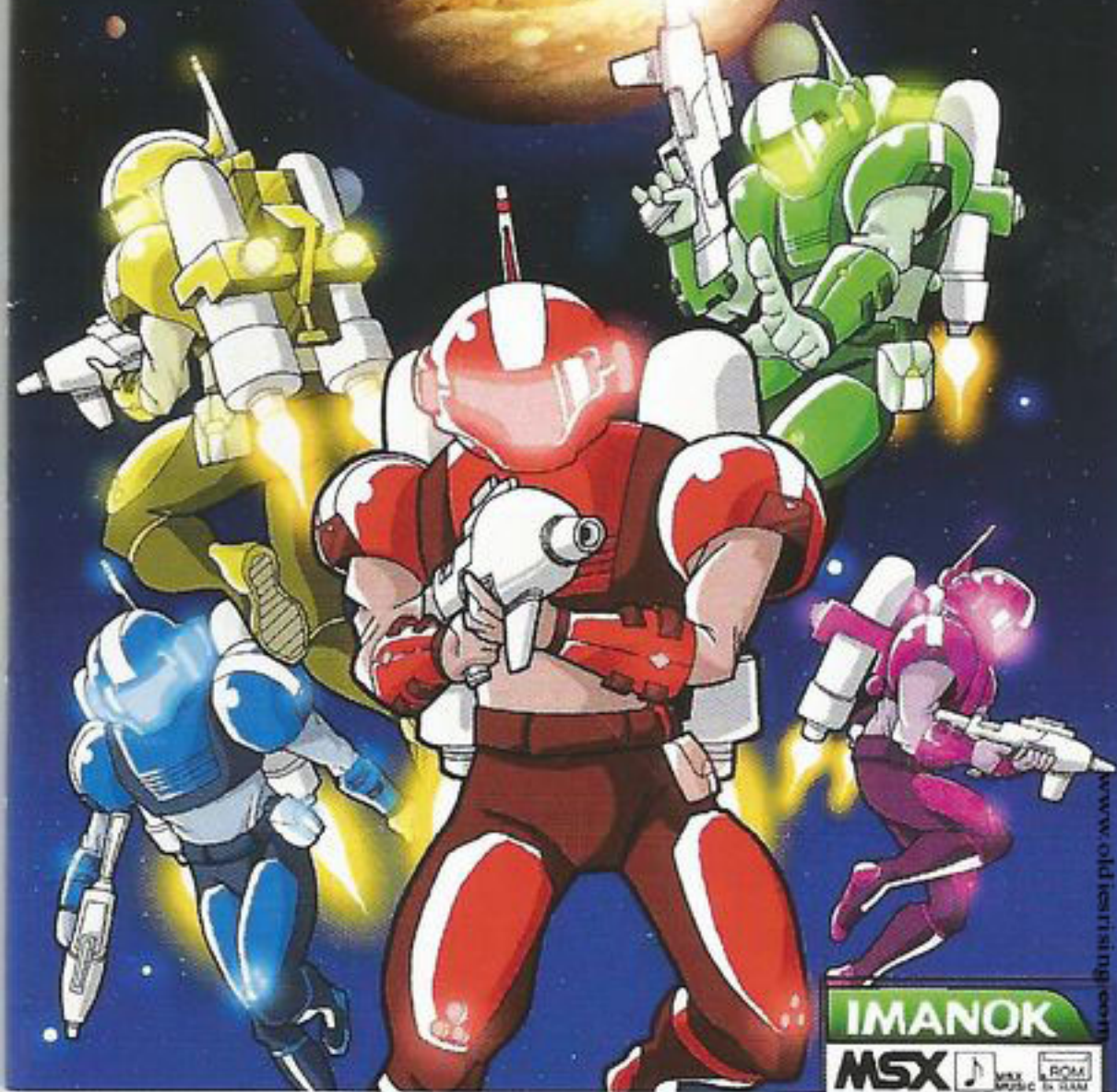


J.E.T.P.A.C.

JUPITER ELITE TROOP POWER AFIELD COMPANY

© IMANOK 2004

USER'S MANUAL



STORY

This story takes place in the year 2059. Since the Earth's limited resources have been wasted by the human race, new energy sources had to be found out of the planet.

After several years of investigation, a group of scientists discovered new minerals under the crust of Jupiter moons. Those minerals turned out to be a great energy source, that's why a large scale exploitation was planned from Earth. So the **Power Afield Company** (P.A.C.) was founded in order to create 5 automatic driller robots called **Drilleroids** designed to carry out all the work without need of human intervention.

The Drilleroids were sent to Jupiter and started to work successfully. Nevertheless, unexpected troubles came up: there was life under the crust of Jupiter moons... small beings which felt threatened by the presence of the Drilleroids and attacked them causing serious damage.

A space mission manned by a team of experienced astronauts was launched to repair the Drilleroids and equip them with a self-defense system to avoid future attacks. This mission was called **J.E.T.P.A.C.** (Jupiter Elite Troop Power Afield Company).

They completed their duty and returned to the spaceship willing to return to Earth. Sadly, they found out it had invaded Jupiter's asteroid belt, receiving several serious impacts: the main power generator and the transmission systems were damaged. The team was condemned to die, resting forever around Jupiter's orbit.

Suddenly, they came up with a desperate way to save their lives: to obtain the energy modules from the Drilleroids with the hope they could generate enough power to reactivate the spaceship... but after installing the self-defense systems and not being able to disable them by radio, there is no option but fighting the Drilleroids to snatch their energy modules.

START THE GAME

Caution. First of all, follow the next advise not to damage your machine neither your J.E.T.P.A.C. cartridge:

- Always be sure that your MSX computer is turned OFF when inserting and/or removing the cartridge.
- Don't touch slot connections.
- Avoid extreme temperatures, humidity and impacts.
- Don't try to open the cartridge case.

To start with the game, insert the cartridge properly and turn on your MSX.

At the title screen press <SPACE>/<A BUTTON> to start playing.



HOW TO PLAY

Fly into the caves with the help of your jetpac, getting rid of the dangerous creatures with your mid-range laser gun, dodging through a way full of twists and turns... until you get to the Drilleroids and take the longed energy modules.

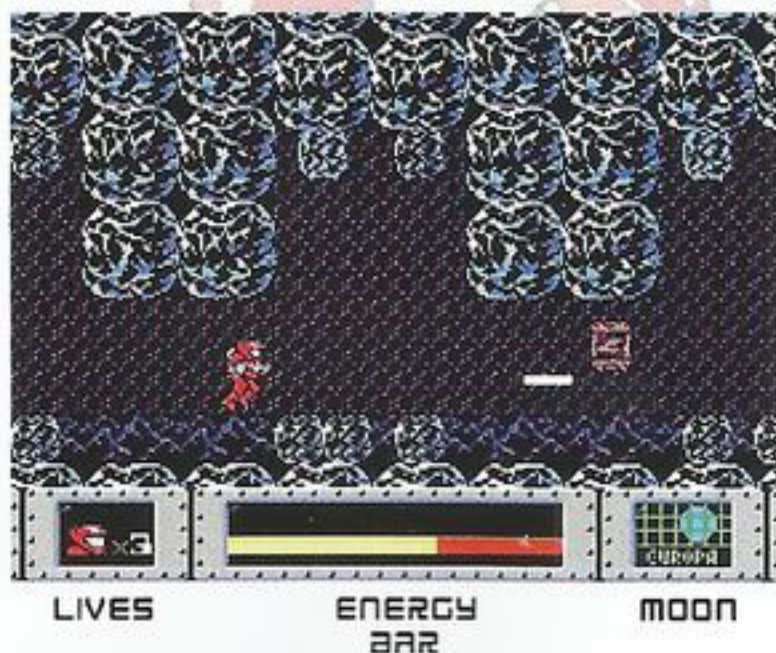
Due to the gravity inside the caves, you will have to keep on using your jetpac's propulsion system so that you don't fall down and crash against the rocks.

Under the action screen, you'll see a panel with several indicators (from left to right):

LIVES: It shows your lives in stock.

ENERGY BAR: Your equipment depends on this energy bar. It will decrease slowly by using the jetpac and the laser gun or quickly by crashing through the rocks or by receiving enemy impacts. Once it runs out, you won't be able to use your equipment anymore and you will fall down inevitably. Anyway, you'll be able to refill it by picking up the energy pods you may find on your way.

MOON: It shows the moon where you are going through.



JUPITER MOONS

Below you can see some information about the moons where the Drilleroids are working:

CALLISTO is the third largest satellite in the Solar System and orbits beyonds Jupiter's main radiation belts. Callisto is the most heavily cratered object in the Solar System. It's thought to be a long dead world, with a nearly complete absence of any geologic activity on its surface. Its interior is completely rocky.

GANYMEDE is the largest moon of Jupiter. It has no atmosphere, but there is ozone at its surface. It seems to be very fertile under the crust because of an inner water mantle, where moss and creepers cover it all, creating a great swamp.

EUROPA is slightly smaller than the Earth's moon. There's a huge frozen ocean of salty water covering the whole surface, so it's a long way drilling to get to the outer mineral layer.

IO is the most volcanically active body in the solar system. Io is the third largest of Jupiter's moons and its orbit is perturbed by Europa and Ganymede, thus it's subjected to tremendous tidal forces, which generate a huge amount of heat within, keeping much of its subsurface crust in liquid form.

AMALTHEA is inside Io's orbit. Its interior is very unstable, lacking either the mass and fluidity of composition to maintain its shape. That's why a metallic reinforcement must be built while drilling to keep an stable area and guarantee a secure way out. Amalthea's living beings are also the most dangerous and aggressive, so the most powerful defense system has been installed there to eradicate them.

CONTROLS & KEYS

Player Control: Cursors Keys/Joystick (in any port).

<LEFT> & <RIGHT>: Move backwards & forward.

<UP>/<M>/<N>/<GRAPH>/<B BUTTON>: Jetpac propulsion.

<SPACE>/<A BUTTON>: Use the laser gun. Keep it pressed for autofire (recommended).

<STOP>: Pause game.

EXTRAS

If your MSX computer is equipped with a VDP9938 or higher you'll be able to activate the following features by pressing these keys while loading the game:

<GRAPH>: The real MSX1 palette will be emulated.

<SELECT>: Force 60 Hz (NTSC) switching.

Notes about MUSIC:

- Same speed at 50/60 Hz.
- PSG complete OST and sound FX.
- Enhanced sound if you use FMPAC together with the game or your MSX machine includes internal OPL chip.

MINIMUM REQUIREMENTS

MSX1 with 8Kb RAM

STAFF

Code.....	David Fernández (Imanok)
Additional Code....	Armando Pérez (Ramones)
Pixels & Sound FX..	Der Kosmonaut
Music.....	Carlo Bandini
Artwork.....	David Casanovas (RC743)

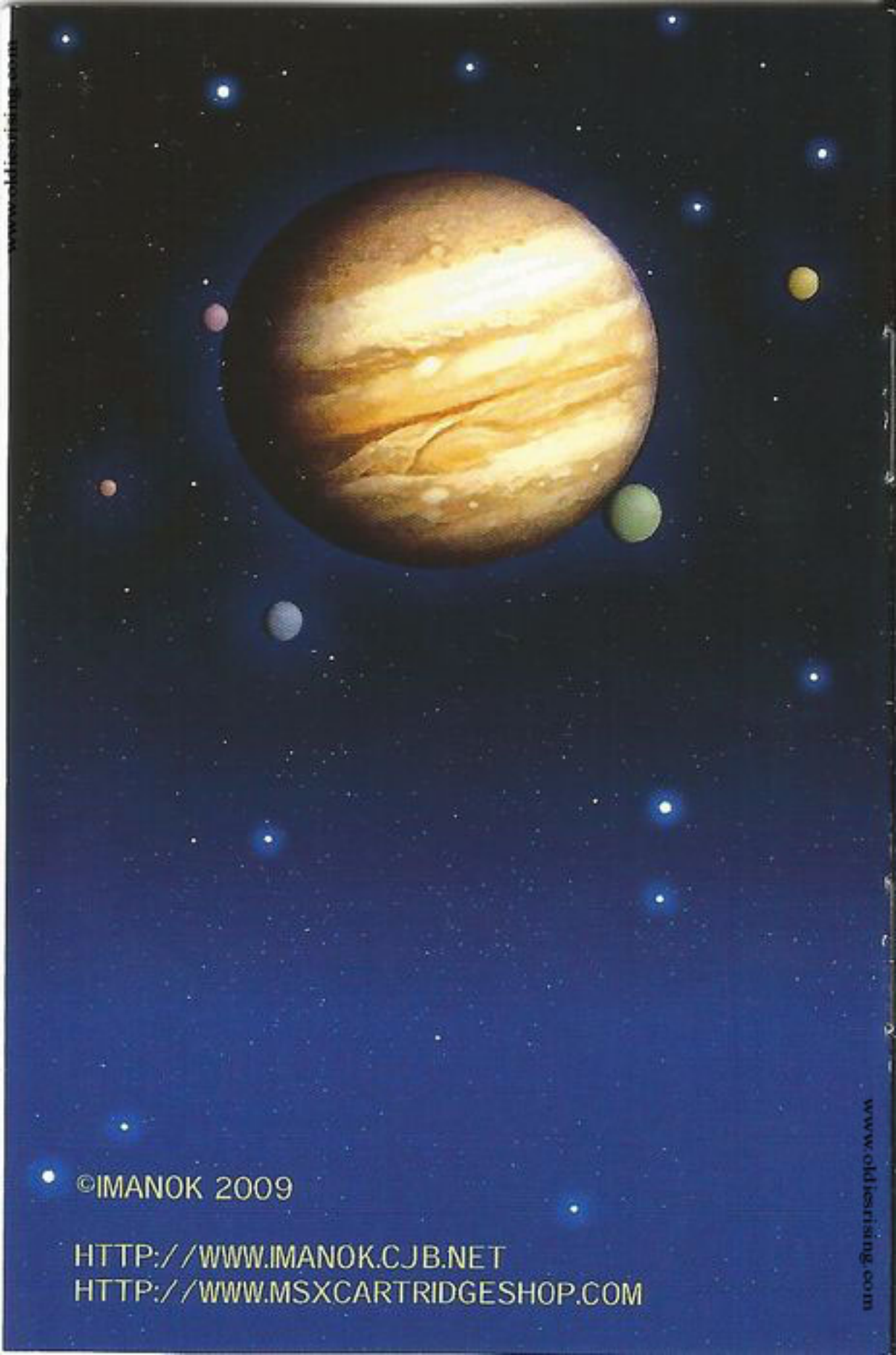
Thanks to our friends and relatives for their support.

Visit Imanok MSX Site:

<http://www.imanok.cjb.net>

Enjoy the game!

J.E.T.P.F.
JUPITER ELITE TROOP POWER RIFLE COMPANY



www.oldsirising.com

©IMANOK 2009

[HTTP://WWW.IMANOK.CJB.NET](http://WWW.IMANOK.CJB.NET)

[HTTP://WWW.MSXCARTRIDGESHO.COM](http://WWW.MSXCARTRIDGESHO.COM)

www.oldsirising.com